



SsangYong Motor Company

12th floor, Poonglim building 823,
Yeoksam-dong, Gangnam-gu,
Seoul, 135-784, Republic of Korea
Phone : 82-2-3469-2096
Fax : 82-2-3469-2285
Official Website : www.smotor.com
Official Facebook  :
<https://www.facebook.com/ssangyongglobal>

Some of the equipment shown in this brochure is optional
and may not be available on all models or in all markets.
All specifications are subject to change without notice.
Please contact your local dealer for the latest information.

SYMC 201411 LHD ENGLISH Printed in KOREA



NEW **ACTYON**
SPORTS
More Power, More Fun



New Actyon Sports Delivers More Power

A new, more powerful engine, dynamic styling and better fuel efficiency are all yours with this exciting SUT from Ssangyong Motor. New Actyon Sports is equipped to boost your performance at work and at play.

— And More Fun —

The great utility, comfort and versatility of
New Actyon Sports bring greater enjoyment to your leisure.
That translates into a better quality of life.





— This New Look Sets a New Standard —

New Actyon Sports lets you stand apart from the crowd in any environment. The sharp front hood character line, hexagonal radiator grille and chic black bezel blend dynamism with refinement.



The Spruced-up Driver's Space Offers Lots of Extras

The new trip computer in the gauge cluster tracks your travel distance, travel time and fuel consumption, while the speed-sensitive power steering system self-adjusts the amount of steering assist necessary to enhance driving stability and control at any speed. The steering wheel is heated and features a natural leather cover, and a carbon pattern adds refinement to the gearshift lever.



Trip computer in the center of the LED cluster



Carbon pattern on and around the gearshift lever



Heated and tilting power steering wheel with leather cover

Traveling is More Pleasurable in the New Cabin

Fresh features have been installed inside New Actyon Sports to enhance the comfort and enjoyment of the driver and passengers. Specifically, a Bluetooth switch has been added to the steering column to allow hands-free operation. The seats now come with a choice of natural leather and woven fabric covers, and the front and rear seats are all heated. The driver's seat can be adjusted eight ways to conform to the individual body type, while the front passenger's seat is four-way adjustable.



Full auto air conditioner



Heated seats in front and rear



Multi-adjustable seats in front



Enhanced recline angle in rear





The New Engine is More Powerful and Economical

Improvements in the engine and transmission have enhanced the performance of New Actyon Sports, meaning still more value to you.



2.0L e-XDi active diesel engine



2.3L petrol engine



6-speed manual

The manual transmission with six forward gears, enhancing fuel efficiency, handling and eco-friendliness. The CO₂ level has been lowered to 196 g/km in rear-wheel drive and 199 g/km in part-time 4-wheel drive, which satisfies the tougher Euro 5 emission standards.



5-speed automatic

The transmission is optimally tuned for the high-performance engine. power mode maximizes output, while in winter mode the driver can start out or back up in second gear to prevent slipping on snow or ice.

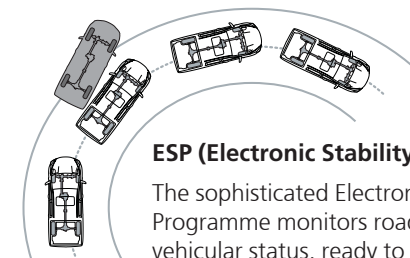


Manual mode

New Actyon Sports with automatic transmission features a sporty driving option. Switches on the gearshift knob let the driver shift gears up or down manually.

Safety and Driveability Go Hand in Hand

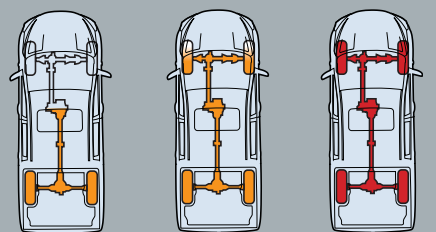
The ability to venture forth both confidently and safely on any terrain under all conditions defines the true SUV. And New Actyon Sports performs this role exceptionally well.



ESP (Electronic Stability Programme)

The sophisticated Electronic Stability Programme monitors road conditions and vehicular status, ready to adjust engine output and brake force automatically should the driver be in danger of losing control on wet or icy surfaces or in sharp turns at high speed.

Part-time 4WD



2WD high-gear mode 4WD high-gear mode 4WD low-gear mode



Airbags in front

The driver's seat and front passenger's seat are each equipped with their own front airbag.

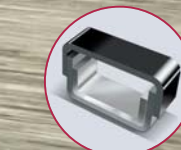


TPMS

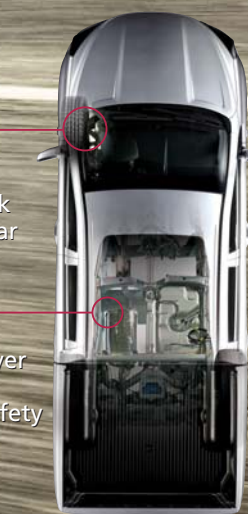
The TPMS measures tyre pressure constantly and when abnormality is detected issues an alert to the driver that reflects the degree of urgency.



Double-wishbone suspension in front combined with 5-link suspension in the rear



An ultra-rigid steel frame with triple-layer construction for maximum passive safety protection



Utility is Maximized by Versatility, Capacity and Power

New Actyon Sports has one of the most powerful engines in its class and is capable of towing loads as heavy as 2,300 kilograms. The cargo bed measures two square meters, and with the tailgate down, you get enough room to carry motorbikes, mountain bikes, skis, camping gear and other long or bulky objects.

And this rugged off-road performer is sure to get you to your destination comfortably and safely, when on the job or on vacation.



Style, Comfort and Convenience Extras

Take a good look inside and outside New Actyon Sports.
You will be pleasantly surprised at all the features you can discover that enhance appearance and performance.
Combined, these extras make this SUT safer, more pleasant and easier to use.



Sun roof



Hood character line



Outside door handle



Powered and heated outside mirrors



Safety power window on driver's side



Bed inner cover



Mud guard



Backup warning system



Sunglasses holder



Multi-sensors



Map pocket on doors



Ticket holder



Sliding headrests in front



Cup and stationary holders



Compartment under rear seat



Remote controller kit



USB & Aux. port



Trip computer



Multifunction control switches



Automatic climate control



2-Din audio system with MP3 and CD players



Sun-visors with vanity mirror and illumination



Electrochromatic rearview mirror



Headlamp leveling device



Cabin lamps



Power outlets



Battery saver



Visual vehicle identification number plate
(EU region only)



18" Hyper silver wheels



18" Alloy wheels



16" Alloy wheels



16" Steel wheels

Seat Covers



Leather seat cover



TPU (Thermoplastic Polyurethane) cover



Fabric seat cover

Interior Colours



Available Exterior Colours



Indian Red (RAJ)



Fijian Blue (BAP)



Canyon Brown (OAQ)



Marble Gray (ACM)



Fine Silver (SAF)



Grand White (WAA)



Space Black (LAK)

FEATURES LIST

MECHANICAL
2.0L e-XDi active diesel engine (155ps)
2.3L petrol engine (150ps)
Part-time 4WD
6-speed manual transmission with diesel
5-speed automatic transmission with diesel
5-speed manual transmission with petrol
Double-wishbone front suspension system with coil springs
Five-link rear suspension with coil springs
Hydraulic power steering
Speed sensitive power steering

SAFETY
Tyre Pressure Monitoring System (TPMS)
Ultra-rigid frame for greater strength, less vibration and noise
Door impact beams for optimal protection from side collisions
Airbags for driver and front passenger
Seatbelt load limiters and pre-tensioners
4-channel anti-lock braking system
Electronic Stability Program (ESP) with ARP and HSA
Disc brakes on all 4 wheels (diesel version)
Front ventilated disc brakes
Backup warning system with 3-stage alarm
Door courtesy lamps
Front and rear fog lamps
Electrochromic rearview mirror
Immobilizer system
Childproof safety lock
Speed sensitive door lock
Collapsible steering column
ISO-FIX and tether anchorage for baby car seat
Seatbelt reminder for driver
Daytime running lamps (Europe)
Safety power window on driver's side
Visual VIN plate

* Some of features may be optional or not be available according to market. Please, contact your local dealer for the exact details regarding vehicles sold in your area.

APPEARANCE
Deck cover
Roof Rack
16" Steel wheels with 225/75 tyres
16" Alloy wheels with 225/75 tyres
18" Alloy wheels with 255/60 tyres (No flange)
18" Alloy wheels with 255/60 tyres (hyper silver, No flange)
Full-sized spare tyre
Chrome and black radiator grille
Black bezel headlamps
All-around tinted glass
Exterior door handles in body colour
Power sunroof
Waist line molding - highlighted by a stainless steel insert
Pole antenna
LED side repeaters
Rubber blade wiper
Inside door handle - silver paint

CLIMATE CONTROL
Manual air conditioning
Fully automatic air conditioning with temperature sensor and outside temperature gauge
Rear heating duct
PTC heater

SEATS
Appealing sporty woven fabric seat covers
TPU (Thermoplastic Polyurethane) seat covers
Luxurious leather seat covers
Heated front seats
Heated rear seat
2 nd row seats with folding centre armrest
Front sliding headrest
Height adjustable driver's seat
8-way power driver's seat
4-way power front passenger's seat

CONVENIENCE
Cruise control system
Luxurious leather knob for gear shift lever
Luxurious leather cover for steering wheel
Carbon pattern grain accented on center fascia
Floor mats
Dual remote keyless system (REKES) - folding type (Diesel)
2-Din audio system with mp3 and CD players (with RDS for EU region)
USB & Aux. port
4 speakers
Bluetooth hands-free
Audio remote control switch on steering wheel
Auto light control and rain sensing wipers
Compartment under rear seat
Electric folding outside mirrors
Heated and adjustable outside mirrors
Battery saver
Illumination color - orange
Heated windshield glass
Headlamp leveling device
Trip computer
Bed inner cover
Shopping bag hook
Heated rear glass with timer to defrost
Spray washer nozzle
Deluxe mobile illuminated ashtray
Deluxe overhead console in easy reach
Digital clock on dashboard
Handy centre storage console
Cup and stationary holder in the console
Sun-visors with vanity mirror and illumination
Heated steering wheel

TECHNICAL DATA

ENGINE			DIESEL 2.0 (W/CDPF)				PETROL 2.3		
DRIVEN WHEELS			2WD		PART-TIME 4WD		2WD	PART-TIME 4WD	
EMISSION			EURO 5				EURO 4		
TRANSMISSION			6MT	5AT	6MT	5AT	5MT		
DIMENSIONS	Overall length		mm	4,990					
	Overall width		mm	1,910					
	Overall height		mm	1,790 (with roof rail : 1,780)					
	Tread	Front	mm	1,570					
		Rear	mm	1,570					
	Overhang	Front	mm	860					
		Rear	mm	1,070					
	Wheelbase		mm	3,060					
	Approach angle		degree	25.0					
	Departure angle		degree	25.0					
	Ramp angle		degree	20.0					
	Min. clearance	Front	mm	188					
		Rear	mm	212					
Min. turning radius		m	6.2						
WEIGHT	Gross vehicle weight		kg	2,640		2,740		2,600	2,700
	Kerb weight		kg	1,873~1,913	1,895~1,935	1,982~2,022	1,995~2,035	1,835~1,876	1,944~1,984
	Maximum cargo loading		kg	352~392	330~370	343~383	330~370	349~390	341~381
	Gross trailer weight	Braked	kg	2,300				1,800	
		Unbraked	kg	750				750	
ENGINE	Fuel		-	Diesel				Petrol	
	Capacity		cc	1,998				2,295	
	Bore X stroke		mm	86.2 X 85.6				90.9 X 88.4	
	Compression ratio		-	16.5:1				10.0:1	
	Number of cylinders		-	4 in-line					
PERFORMANCE	Max. power	kw/rpm	114/3,400~4,000				110/5,500		
		ps/rpm	155/3,400~4,000				149.5/5,500		
	Max. torque	Nm/rpm	360/1,500~2,800				214/3,500~4,600		
		kg.-m/rpm	36.7/1,500~2,800				21.8/3,500~4,600		
	Low-end torque		Nm/rpm	190/1,000				-	
	Max. speed		Km/h	163				161	
FUEL CONSUMPTION	Hill startability		degree	26.5	32.9	22.6	30.9	16.4	16.1
	CO ₂ (combined)		g/Km	196	195	199	199	288	293
	Combined		L/100Km	7.4	7.4	7.5	7.6	12.2	12.4
	Urban		L/100Km	9.5	9.1	9.6	9.2	16.1	16.3
	Extra urban		L/100Km	6.2	6.4	6.4	6.6	9.9	10.0

DIMENSIONS



* The fuel economy can vary according to road conditions or driver's habits.
* The technical data can vary slightly by regional certification requirements or sales specifications.